



RPG Research is a non-profit 501(c)3 human services charitable research & community services organization. Since 1983 our staff have been studying the effects of all role-playing game formats. Since 2004 our website has provided an open, free, international repository of research information. Our multidisciplinary programs draw from therapeutic recreation, music, neuroscience, psychology, & other knowledge domains.

VISION

Use scientific research to determine the actual benefits & caveats of participating in role-playing game & music activities. Over time we will:

- Eliminate myths & stigma associated with RPGs.
- Help participants achieve an improved quality of life.
- Raise the experience of the human condition globally by sharing knowledge on a free platform that is accessible to all.
- Encourage others to use this free platform to share their findings.
- Provide free skills-training to who want to volunteer to achieve these goals.
- Provide services to achieve the ends stated above.



RESEARCH

Research shows that people who regularly participate in RPGs have significant advantages over those who do not, including: lower suicide rates, lower feelings of meaninglessness, stronger communication, math, reading, writing, problem-solving, & social skills. They are also more adept at team building, research, cooperation, impulse control, leadership & empathy, and are often more creative.

Research *does* indicate role-playing gaming has a strong *causal* relationship for **educational benefits**, leading to many schools throughout the world now using RPGs in various forms for education, from K-12 & beyond. Research also indicates there may be **significant therapeutic benefits** for participants as well, but this needs to be clarified through additional scientific testing.



FOUNDING OF RPG RESEARCH

W.A. Hawkes-Robinson ("Hawke Robinson"), is founder of RPG Research. He is registered with the Washington State Department of Health as a Recreational Therapist, and also has an extensive background in research psychology, neuroscience, music therapy, and computer science.

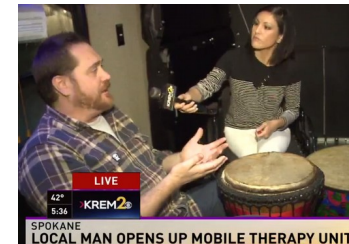
Hawkes-Robinson first began researching the educational and social effects of role-playing

games in the early 1980s as a response to the barrage of negative press commonly disseminated regarding role-playing games & gamers. Since 1985, he has implemented role-playing games in educational settings.

The formal development of RPG Research began in 2004, first considering the breadth of the bi-psycho-social impact of tabletop role-playing games, and then their potential uses to achieve therapeutic goals for a wide range of populations, as well as important adaptive considerations for accessibility and inclusiveness.

In 2017 RPG Research incorporated as a 501(c) non-profit research & human services charitable organization.

KREM2 NEWS & NORTHEAST YOUTH CENTER



COMMUNITY PROGRAMS

We provide program plans for many communities throughout the Northwest, including for community centers, schools, short and long-term care facilities, parks, remote locations, and public events - especially for those most in need.

www.rpgresearch.com/community



RPG Research at Muscular Dystrophy Association (MDA) 2017

POPULATIONS

We work with all populations from 2 years old to 102+ years old, including but not limited to:

- At-risk youth
- ADHD
- Autism spectrum (ASD / PDD)
- Brain injury (TBI/stroke, etc.)
- DD/DI
- Deaf & HoH
- Incarcerated and transitional
- In-patient/out-patient transition
- Mental & physical health
- MD & CP
- Skills training/development
- Social phobias
- Social skills development
- Visually impaired, & many others



ACCESSIBLE & INCLUSIVE

Wheelchair accessible RPG Trailer & RPG Bus.



SUPPORT OUR PROGRAMS: DONATE

You can help the non-profit RPG Research achieve the goals of research and community programs by becoming a members, supporting us:

www.rpgresearch.com/donate



Photo: RPG Research Volunteers in front of Wheelchair Friendly RPG Trailer (2017)

VOLUNTEER OR SCHEDULE TODAY!

If you are interested in participating in, or helping with, upcoming RPG Research projects, register via the website. *We are currently accepting applications for as many participants and volunteer staff as possible, both gamers and non-gamers alike are welcomed!* Sign up today! www.rpgresearch.com/volunteer

RPG Research, A 501(c) non-profit charity.

1312 North Monroe Suite #114, Spokane, WA, 99201

Toll-free Phone: (833) RPG-INFO (774-4636)

For Deaf/HoH, SMS Text: (509) 608-7630

info@rpgresearch.com



**Inclusive & Accessible
Research & Community
Programs Measurably
Improving Lives**

**LEARN & SHARE
SUPPORT
VOLUNTEER
PARTICIPATE
COOPERATE
GROW
EMPOWER**

www.rpgresearch.com